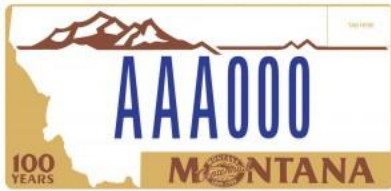


Alternate Standard Plates



1989



1991



2000



2006

Standard Plates



Blue Shrine
Donation fee - \$25

Alternative Energy Res
Donation fee - \$20

Alzheimer Assn
Donation fee - \$30

AniMeals
Donation fee - \$20

ARC Five Rivers
Donation fee - \$20

Bagdad Temple
Donation fee - \$20

Beartooth Back Country Horsemen
Donation fee - \$25

Benefits Mercy Flight
Donation fee - \$20

Big Fork Dev
Donation fee - \$20

Big Sky Economic Development
Donation fee - \$25

Big Sky Ski Education Foundation
Donation fee - \$20

Billings Catholic Schools
Donation fee - \$25

Billings City Council
Donation fee - \$20

Biomimicry Institute
Donation fee - \$20

Bitter Root Humane Assoc
Donation fee - \$20

Blackfoot Tribe
Donation fee - \$20

DONATION FEE IS IN ADDITION TO PLATE FEES

MONTANA
BOB MARSHALL WILDERNESS
AAA-000

Bob Marshall Fnd
Donation fee - \$20

MONTANA
AAA000
BOY SCOUTS OF AMERICA

Boy Scouts MT
Donation fee - \$25

MONTANA
AAA-000
BOZEMAN SCHOOLS

Bozeman Dist 7
Donation fee - \$20

MONTANA
Ski BRIDGER
AAA-000
A WORLD CLASS COMMUNITY SKI AREA

Bridger Ski
Donation fee - \$10

MONTANA
Browning Schools
AAA-000
Home of Indian Pride

Browning Public Scl Dist 9
Donation fee - \$20

MONTANA
AAA-000
Let Buffalo Roam

Buffalo Field Campaign
Donation fee - \$20

MONTANA
AAA000
BUTTE HIGH BULLDOGS

Butte School Dist
Donation fee - \$25

MONTANA
AAA-000
THE MINING CITY
BUTTE AMERICA

Butte Silver Bow Govt
Donation fee - \$20

MONTANA
SEARCH & RESCUE
AAA000
...SO THAT OTHERS MAY LIVE

CAN AM Lifeline Search & Rescue
Donation fee - \$20

MONTANA
CANCER FAMILY NETWORK OF MONTANA
AAA-000
FAMILIES HEALING TOGETHER

Cancer Support Comm of MT
Donation fee - \$25

MONTANA
ACA-846
CASA
Court Appointed Special Advocates
I am for the child

CASA of Montana
Donation fee - \$25

MONTANA
AAA000
Marianas
BUTTE CENTRAL CATHOLIC SCHOOLS

Central Educ Found of Silver Bow
Donation fee - \$25

Montana
AAA000
(406) 2-FOSTER

Child Bridge Inc
Donation fee - \$30

MONTANA
PERM
AAA 000
CHROME FOR KIDS

Chrome for Kids
Donation fee - \$20

Share **Montana** Enjoy
AAA-000

Citizens Balanced Use
Donation fee - \$25

MONTANA
AAA000

City of Bozeman
Donation fee - \$20

DONATION FEE IS IN ADDITION TO PLATE FEES

City of Lewistown
Donation fee - \$20

City of Missoula Parks & Recreation
Donation fee - \$20

City of Shelby
Donation fee - \$20

Clark Fork Coalition
Donation fee - \$20

Columbia Falls School Dist #6
Donation fee - \$20

Community Medical Center Fnd
Donation fee - \$30

Crime Stoppers
Donation fee - \$20

Crow Tribe Exec
Donation fee - \$20

Custer Battlefield
Donation fee - \$20

Defenders of Wildlife
Donation fee - \$20

Dept of MT Veterans of Foreign Wars
Donation fee - \$20

Ducks Unlimited
Donation fee - \$20

EAA Cpt 517
Donation fee - \$20

Eagle Mount
Donation fee - \$20

Eastgate VFD Assn
Donation fee - \$20

Elizabeth Custer Library & Museum
Donation fee - \$25

DONATION FEE IS IN ADDITION TO PLATE FEES

Eureka MT Quilt
Donation fee - \$20

Eureka Pulbic Schools
Donation fee - \$25

Five Valleys Land
Donation fee - \$20

Flathead HS Booster Club
Donation fee - \$15

Flathead Lake Prot Assn
Donation fee - \$20

Fort Peck Tribes
Donation fee - \$20

Friends of Lee Metcalf
Donation fee - \$20

Friends of Makoshika
One time donation fee - \$50

Friends of NRA
Donation fee - \$25

Friends of Wild Swan
Donation fee - \$25

Gallatin Open Lands
Donation fee - \$25

Garnet Preservation
Donation fee - \$20

Girl Scouts of MT & WY
Donation fee - \$20

Glacier HS Booster Club
Donation fee - \$20

Glacier National Park
Donation fee - \$20

Great Falls Schools
Donation fee - \$20

DONATION FEE IS IN ADDITION TO PLATE FEES

MONTANA
WILD YELLOWSTONE
AAA000

Greater Yellowstone Coalition
Donation fee - \$20

MONTANA
AAA000
Grizzly & Wolf
Discovery Center

Grizzly & Wolf Center
Donation fee - \$25

MONTANA
AAA000
Habitat
for Humanity

Habitat for Humanity of Gallatin Valley
Donation fee - \$20

MONTANA
AAA·000
Hamilton Public Schools
Learning for Life

Hamilton Dist 3
Donation fee - \$20

MONTANA
AAA·000
WRESTLING

Havre Wrestling Club
Donation fee - \$25

MONTANA
AAA000
SUPPORT your local ANIMAL SHELTER

Heart of the Valley Inc
Donation fee - \$20

MONTANA
AAA 000
GREAT FALLS

Historic Preserv Comm
Donation fee - \$25

MONTANA
AAA000
we love our pets

Humane Soc Westrn
Donation fee - \$35

MONTANA
AAA000
Jeannette Rankin
PEACE CENTER

Jeannette Rankin Peace Center
Donation fee - \$25

MONTANA
AAA000
LEWIS & CLARK HUMANE SOCIETY
Finding forever homes for furry friends since 1964

Lewis & Clark Humane Society
Donation fee - \$20

MONTANA
AAA·000
Lewis & Clark Bicentennial

Lewis Clark Bicentennial
Donation fee - \$20

Montana
AAA·000
LIBBY LOGGERS

Libby School Dist
Donation fee - \$20

MONTANA
AAA·000
LITTLE SHELL TR
CHIPPEWA

Little Shell Tr/Chippewa
Donation fee - \$20

MONTANA
AAA000
LIVESTOCK LOSS BOARD

Livestock Loss Board
Donation fee - \$20

Montana
AAA000
march of dimes
working together for stronger, healthier babies

March of Dimes
Donation fee - \$30

MONTANA
AAA000
Mariah's
CHALLENGE
mariahschallenge.com

Mariah's Challenge
Donation fee - \$25

DONATION FEE IS IN ADDITION TO PLATE FEES



MONTANA
AAA000

Milestown Community Imp
Donation fee - \$20




MONTANA
AAA000
ART4ALL

Missoula Art Museum
Donation fee - \$25



MONTANA
AAA000
Youth Baseball

Mnt Sentinel Little League
Donation fee - \$25



MONTANA
AAA000

the Y
BELIEVES
BETTER
BILLOW
SALADIN VALLEY
BELONG
MONTANA

Montana Alliance of YMCAs
Donation fee - \$25




MONTANA
AAA000
YOUTH HOCKEY

Msla Area Youth Hockey
Donation fee - \$30



MONTANA
AAA000
4-H: The Power of YOUth!

MT 4-H Foundation
Donation fee - \$20




MONTANA
AAA-000
MONTANA'S TREASURES

MT Agencies on Aging
Donation fee - \$30



MONTANA
AAA-000
BIRD HABITAT

MT Audubon
Donation fee - \$20



MONTANA
AAA000
BOWHUNTER

MT Bowhunter Education Foun
Donation fee - \$25



MONTANA
AAA000
MONTANA TROUT

MT Council Trout Unlim
Donation fee - \$20



MONTANA
AAA000
Cowboy Hall of Fame

MT Cowboy Hall of Fame
Donation fee - \$20




MONTANA BIG SKY COUNTRY
AAA 000
The Ride of your Life

MT Cutting Horse Assn
Donation fee - \$20



MONTANA
AAA000
In God We Trust

MT Family Institute
Donation fee - \$25



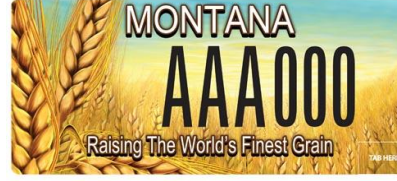
MONTANA
AAA000
SUPPORTING MONTANA AGRICULTURE

MT Farm Bureau Foundatn
Donation fee - \$20



MONTANA
AAA000
FFA: LEADERS WITH A VISION

MT FFA Foundation
Donation fee - \$20



MONTANA
AAA000
Raising The World's Finest Grain

MT Grains Foundation
Donation fee - \$20

DONATION FEE IS IN ADDITION TO PLATE FEES

MT Hope Project
Donation fee - \$25

MT Horse Sanctuary
Donation fee - \$20

MT Library Association
Donation fee - \$25

MT Lions Foundation
Donation fee - \$20

MT Timber Legacy Foundation
Donation fee - \$20

MT Loon Society
Donation fee - \$20

MT Masonic Fnd
Donation fee - \$25

MT Natural History Ctr
Donation fee - \$20

MT Newspaper Fnd
Donation fee - \$20

MT Outdoor Legacy Fnd
Donation fee - \$20

MT Prof Fire Fighters
Donation fee - \$20

MT Raptor Center
Donation fee - \$25

MT Snowmobile Assn
Donation fee - \$20

MT Spay/Neuter
Donation fee - \$20

MT State Golf Assn
Donation fee - \$20

MT Support Our Troops
Donation fee - \$25

DONATION FEE IS IN ADDITION TO PLATE FEES

MONTANA
AAA000
SWIMMING

MT Swimming Inc
Donation fee - \$25

MONTANA
AAA-000
Montana is a Symphony!

MT Symphony
Donation fee - \$20

MONTANA 811
AAA000
Know what's below.
Call before you dig.

MT Utility Council
Donation fee - \$20

MONTANA
AAA-000
Montana Weed Control Association

MT Weed Control
Donation fee - \$20

MONTANA
AAA000
WILD SHEEP FOUNDATION

MT Wild Sheep Foundation
Donation fee - \$30

MONTANA
AAA-000
WILDERNESS

MT Wilderness
Donation fee - \$25

MONTANA
AAA-000
Mule Deer Foundation

Mule Deer Foundation
Donation fee - \$20

explore **MONTANA**
AAA-000
Museum of the Rockies

Museum of the Rockies
One time donation fee - \$50

MONTANA
AAA000
SKI & BOARD
THE LAST BEST PLACE

National Ski MT Snowbowl
Donation fee - \$20

MONTANA
AAA-000
no child left inside

National Wildlife Fed
Donation fee - \$20

Montana
AAA-000
Rodeo

NE MT Fair Rodeo
Donation fee - \$20

MONTANA
AAA-000
Our Last Best Place

Neighbor To Neighbor
Donation fee - \$20

MONTANA
AAA000
The Northern Cheyenne Nation
TSEIŠEŠTAEŠE & ŠO'TAEŠO' PEOPLE

Northern Cheyenne Tribe
Donation fee - \$20

MONTANA
AAA-000
Friend of A.L.E.R.T. ©KRMCC

NW Healthcare Foundtn
Donation fee - \$25

MONTANA
AAA-000
OUR MONTANA

Our Montana
Donation fee - \$20

MONTANA
AAA-000
LIBERTY AND JUSTICE FOR ALL

Patriot
Donation fee - \$15

DONATION FEE IS IN ADDITION TO PLATE FEES

Pheasants Forever Inc
Donation fee - \$35

Planned Parenthood MT
Donation fee - \$25

Prickly Pear Land Trus
Donation fee - \$25

Recycle Montana Inc
Donation fee - \$30

Red Lodge Area C of C
Donation fee - \$20

RichlandCityAmbSvc-SdnyoAmbSvc-Si
Donation fee - \$35

Richland County
Donation fee - \$10

Richland Youth Hockey
Donation fee - \$20

Rocky Mountain Elk
Donation fee - \$20

Rotary District 5390
Donation fee - \$20

Ruby Habitat Foundation
Donation fee - \$20

Sierra Club
Donation fee - \$20

Stafford Animal Shelter
Donation fee - \$20

State Fire Chief Assn
Donation fee - \$20

Student Assistance Fnd
Donation fee - \$20

The Vital Ground Foundatn
Donation fee - \$20

DONATION FEE IS IN ADDITION TO PLATE FEES

MONTANA
AAA000

Tough Enough To Wear Pnk
Donation fee - \$20

TOWN OF **MONTANA**
AAA•000

Town of Browning
Donation fee - \$20

Montana
AAA000

Violence Free Crisis Line
Donation fee - \$20

MONTANA
AAA•000

Walleyes Unlimited MT
Donation fee - \$30

MONTANA
AAA 000

Western Sustainability Exchange
Donation fee - \$20

MONTANA
AAA-000

Whitefish Historical
Donation fee - \$25

MONTANA
AAA000

Whitefish Lake Institute
Donation fee - \$25

MONTANA
AAA000

Whitefish Legacy Partners
Donation fee - \$25

MONTANA
AAA•000

Yellowstone Fnd
Donation fee - \$20

MONTANA
AAA000

Yellowstone Wildlife Sanctuary
Donation fee - \$20

MONTANA
AAA•000

ZooMontana
Donation fee - \$20

MONTANA
JAN 2015

American Diabetes Asn
Donation fee - \$30

MONTANA
AAA000

Anaconda Community Fnd
Donation fee - \$20

MONTANA
AAA-000

Bike Walk MT
Donation fee - \$25

MONTANA
AAA000

Brennans Wave
Donation fee - \$20

MONTANA
AAA000

Capital High School
Donation fee - \$25

DONATION FEE IS IN ADDITION TO PLATE FEES

DEAP Dev Edu Assist
Donation fee - \$20

Friends of Beaver Crk
Donation fee - \$30

Glasgow Scotty Booster
Donation fee - \$20

Intl Christian Cycling
Donation fee - \$30

MT Stockgrowers REEF
Donation fee - \$20

MT Watershed Coordinatn
Donation fee - \$20

Swan Ecosystem Center
Donation fee - \$20

DONATION FEE IS IN ADDITION TO PLATE FEES